

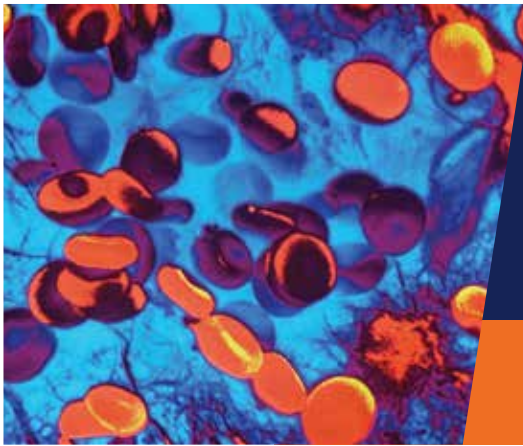
REVIEW REQUIRED

Please review the attached proof. Please make sure all information is correct, including but not limited to:

- Contact information (addresses, phone numbers, email addresses, etc.)
- Credentials
- Dates/times
- Names of people and places, including spelling
- Medical terminology and descriptions

**BY APPROVING THIS PROOF,
YOU ARE CONFIRMING THAT
ALL INFORMATION IS CORRECT.**

Thank you for helping us produce error-free work.



SPRING 2021 ISSUE 5

 **UVA Health**

Partners in Discovery News

UVA CANCER CENTER An NCI-Designated Cancer Center
Member of Oncology Research Information Exchange Network (ORIEN)

UVA is entering its sixth year of participation in the Oncology Research Information Exchange Network (ORIEN), a national alliance of 18 cancer centers that work together toward better methods for preventing, detecting, diagnosing, treating and caring for cancer patients. We achieve this effort through our Partners in Discovery for Total Cancer Care at UVA protocol.

Your generous involvement in the Partners in Discovery for Total Cancer

Care protocol and ORIEN program allowed us to achieve a major milestone of 6,000 enrolled participants at UVA since December 2015. This year, due to the COVID-19 pandemic, we adjusted our clinical research practices to include additional and enhanced safety measures to help us communicate with patients by phone, email and other electronic means. Your consent to stay in contact with us, share clinical data and provide specimens for molecular research

contributes to scientific discoveries that could change how cancer is diagnosed and treated.

We are happy to announce that the ORIEN research program expanded participation in October 2020 to include not only patients at Emily Couric Clinical Cancer Center in Charlottesville but also patients seen at the other UVA Cancer Center sites in Pantops, Augusta and Culpeper.

First Publication by UVA Researchers Using Data Obtained Through ORIEN

This research highlights the importance of tissue donations from patients in discovering new facts about cancer that may ultimately be turned into new more effective therapies.

Benjamin B. Morris, Nolan A. Wages, Patrick A. Grant, P. Todd Stukenberg, Ryan D. Gentzler, Richard D. Hall, Wallace L. Akerley, Thomas K. Varghese, Susanne M. Arnold, Terence M. Williams, Vincenzo Coppola, David R. Jones, David T. Auble, Marty W. Mayo. MYBL2-Driven Transcriptional Programs Link Replication Stress and Error-Prone DNA Repair with Genomic Instability in Lung Adenocarcinoma. In press, Frontiers in Oncology.

<https://doi.org/10.3389/fonc.2020.585551>

Remote Consenting and Community Site Enrollment

With initial COVID-19 restrictions, our team could not be in clinic to consent patients in person. We quickly adopted a remote consent process using phone or email. Some patients prefer the remote process because it can be done at their convenience from home, giving them more time to review information and discuss it with family and their care team. As we gradually shift back to seeing patients in person, we will continue to offer remote consenting.

Patients who receive all or part of their care at UVA Cancer Center sites in Pantops, Augusta and Culpeper can now enroll in ORIEN remotely. This allows us to reach cancer patients in different regions of Virginia who may not come to Emily Couric Clinical Cancer Center in Charlottesville. This provides more diversity in our study participants, which benefits our research efforts. As of the beginning of December 2020, 44 patients have enrolled from these community sites.

Research Survey Opportunities

The ORIEN program at UVA continues to establish collaborations with clinical research investigators who are interested in real-life information about health, personal clinical care experience, level of stress, etc. that is received directly from research participants like you. We usually get this information through surveys.

We may send invitations by email with a link to the survey on a website or provide it in paper form during a clinic visit. Your responses will not be associated with your name or any information that would directly identify you. We plan to offer several surveys in the near future to our study participants. It is your choice whether to participate in these additional research opportunities.

OUR TEAM

Christopher Moskaluk, MD, PhD

Principal Investigator
cam5p@virginia.edu
434.982.4408

Joyce Agati Miller, PhD

Program Director
jma8m@virginia.edu
434.243.3983

Lea Becker, MT (ASCP), CCRC

ORIENT Project Associate
lhb2k@virginia.edu
434.297.4320

Galina Diakova, MS, CCRC, CCRP

ORIENT Data Coordinator
gbd4g@virginia.edu
434.924.5990

Jay Glick, BS

ORIENT Research Coordinator
jme3d@virginia.edu
434.243.3642

Emily Hoade, BA

ORIENT Research Coordinator
esh5rq@virginia.edu
434.924.5524

Emily Leytham, BS

ORIENT Research Coordinator
el5mf@virginia.edu
434.243.4717

Morgan Linblad, BA

ORIENT Research Coordinator
nqk9gs@virginia.edu
434.297.4579

Chance Wright, BS

ORIENT Research Coordinator
cw5xb@virginia.edu

Electronic Newsletter

If you would prefer to receive an electronic version of the newsletter, please send an email with your request and full name to orien@virginia.edu.

Opt Out of the Newsletter

To opt out of receiving the newsletter altogether, please send an email with your request and full name to orien@virginia.edu.

Concerns About the Program

If you have questions or would like to withdraw from the program, you may do so at any time without any effect on your care at UVA Cancer Center. Please email orien@virginia.edu or mail a letter to:

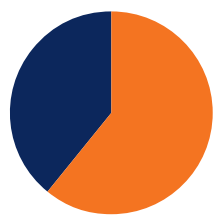
Joyce Miller | UVA Cancer Center, Office of Clinical Research, ORIENT
1220 Lee Street, 3rd Floor ERC | Box 801345 | Charlottesville, VA 22908-0845

Contact Us Please do not hesitate to contact us with any related questions.

We would like to hear from you.

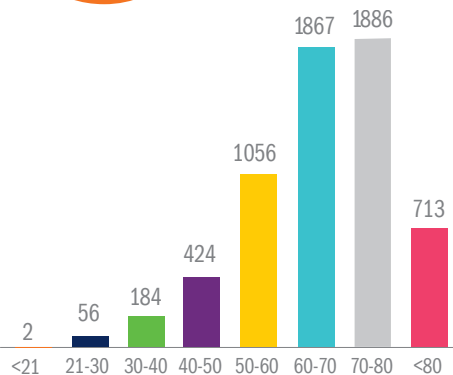
Please email your questions, comments and concerns to orien@virginia.edu.

Learn more at cancer.uvahealth.com/totalcancercare.



UVA ORIEN Enrollment by Gender

Female 3770
Male 2418



UVA ORIEN Enrollment by Age

UVA ORIEN Enrollment by Disease Site

