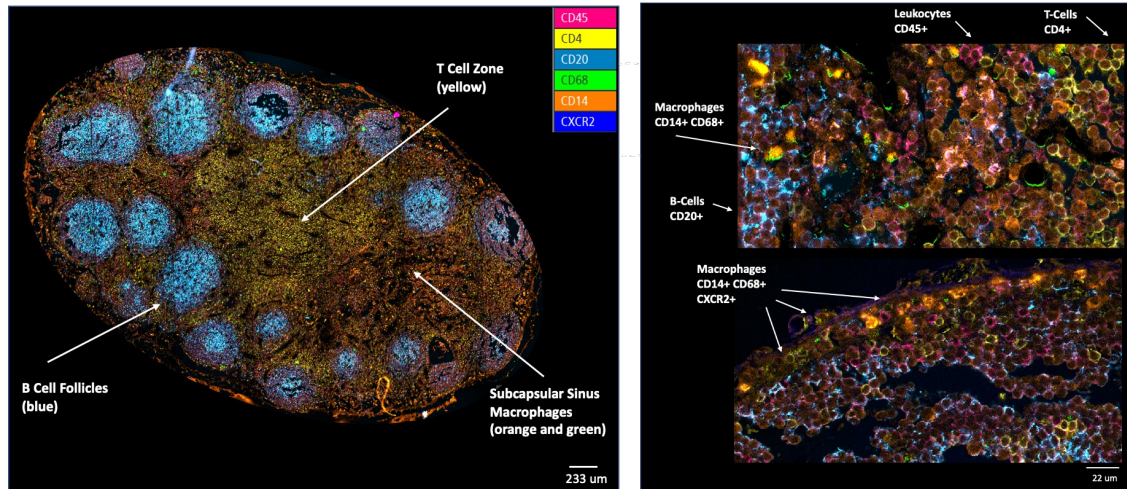


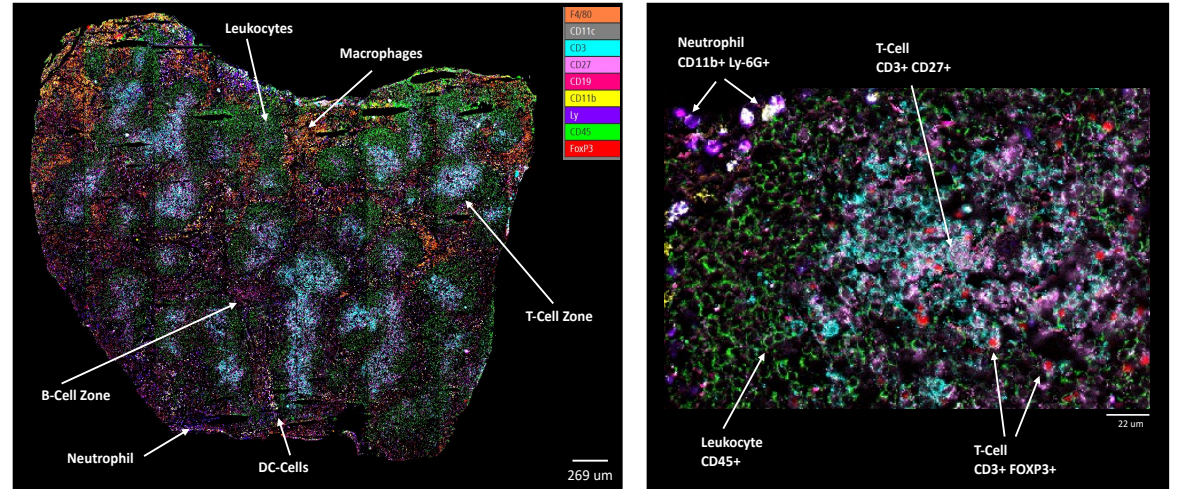
Spatial Biology Core

New Technology - Multiplex Analysis - Single-Cell Resolution

Human Lymph Node - FFPE Sample



Mouse Spleen - FF Sample



*The ZellScannerOne from Canopy can marker more them 20 markers using an optical imaging method based on **staining and bleaching cycles** that allow multiplexed imaging.*

***The Spatial Analysis** predicts morphological features associated with biomarker expression in target tissue sections in a **single-cell** resolution. **Resolution = 500 microns per pixel** .*

It is applicable to Fresh Frozen Tissue, FFPE, TMA and Suspension Cells from any biological fluid.

If you have any questions, please contact Dr. Ana de Oliveira at ak4yj@virginia.edu