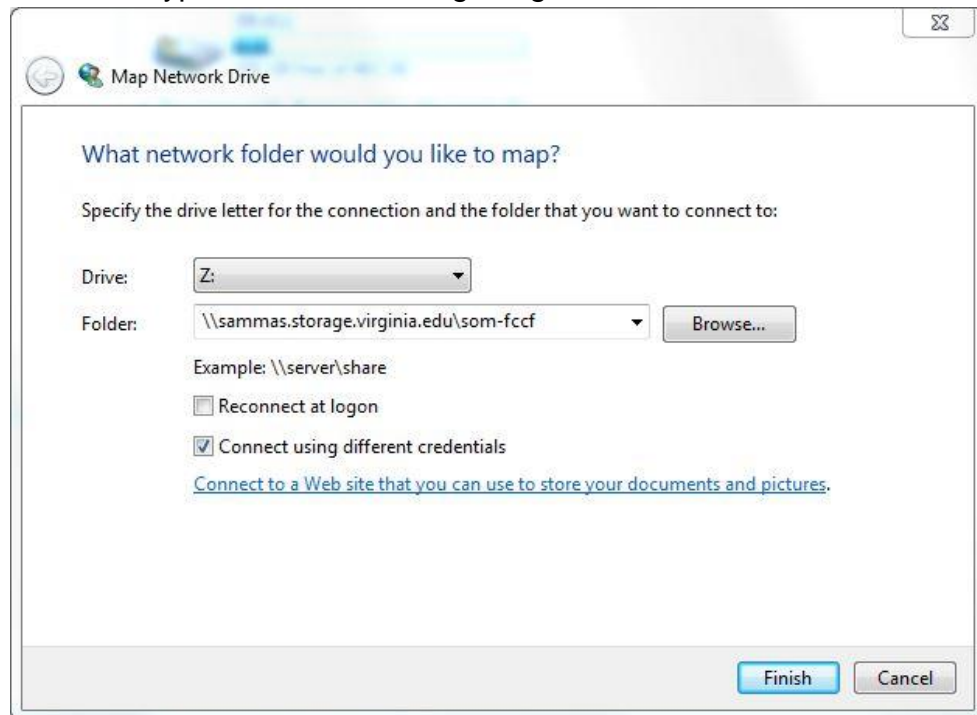


Instructions for Mapping the FCCF Server to your Windows Computer

1. For **Windows 7**(Windows XP users scroll down to page 2):
 - a. Go to Computer on the Windows Desktop
 - b. Click on “Map Network Drive”
 - c. Choose a drive letter
 - d. In Folder, type: \\sammass.storage.virginia.edu\som-fccf

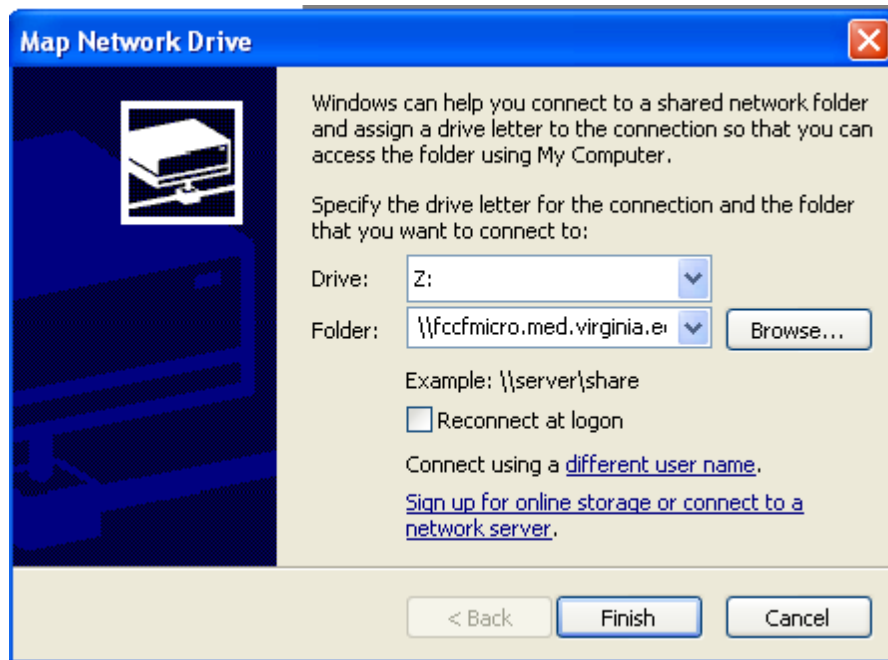


- e. Choose Connect using different credentials.
- f. For User Name, type eservices\UVA computing ID.
- g. For Password, use your eservices password



For Windows XP:

1. Go to My Computer/Tools/Map Network Drive



2. Choose a drive letter
3. In the folder window type [\\sammas.storage.virginia.edu\som-fccf](https://sammas.storage.virginia.edu/som-fccf)
4. Select – Connect using a different user name.
5. For User Name, type eservices\UVA computing ID
6. For password, use your eservices password