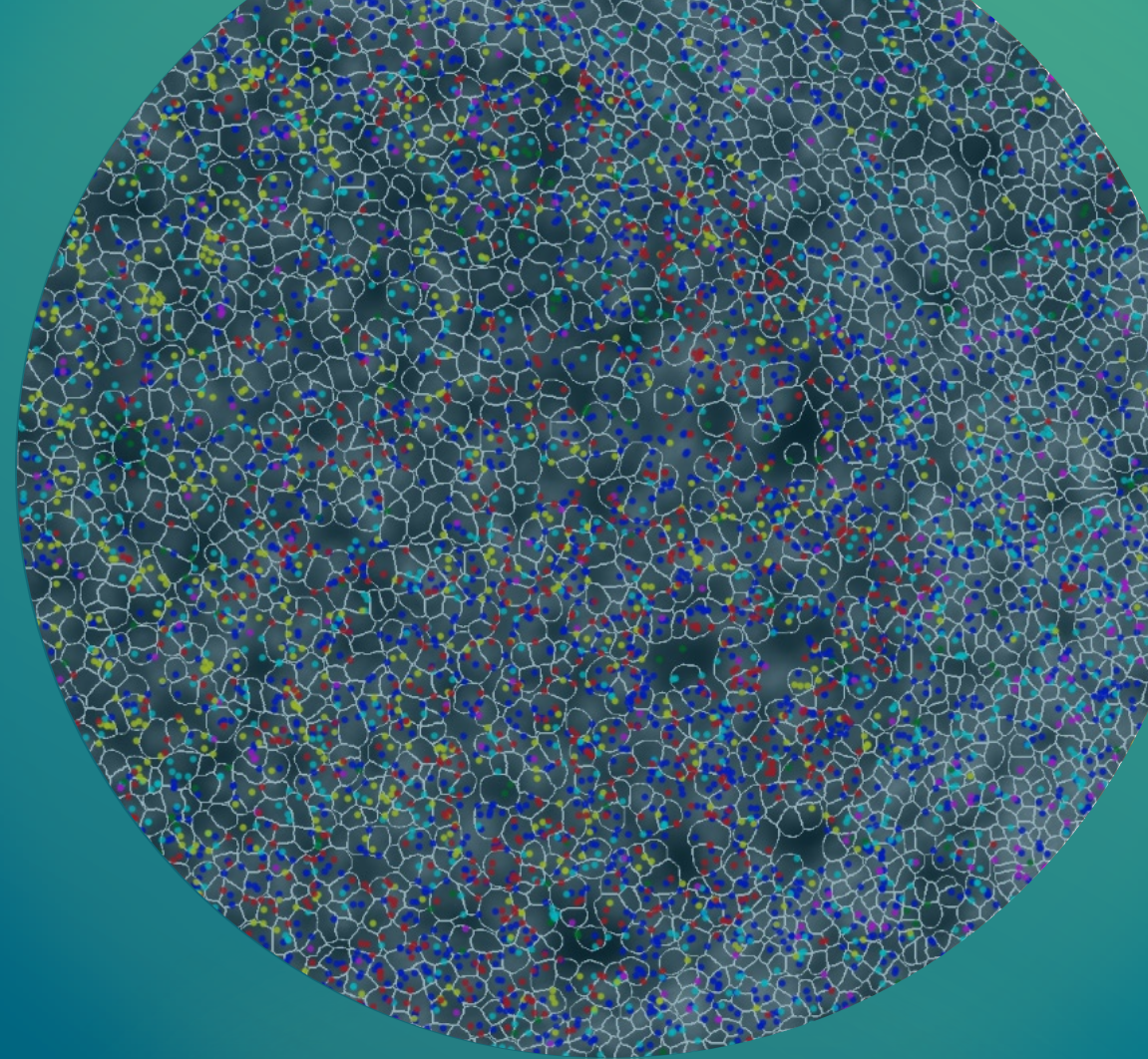


Single Cells. Giant Leaps.

CosMxTM Spatial Molecular Imager



nanoString[®]

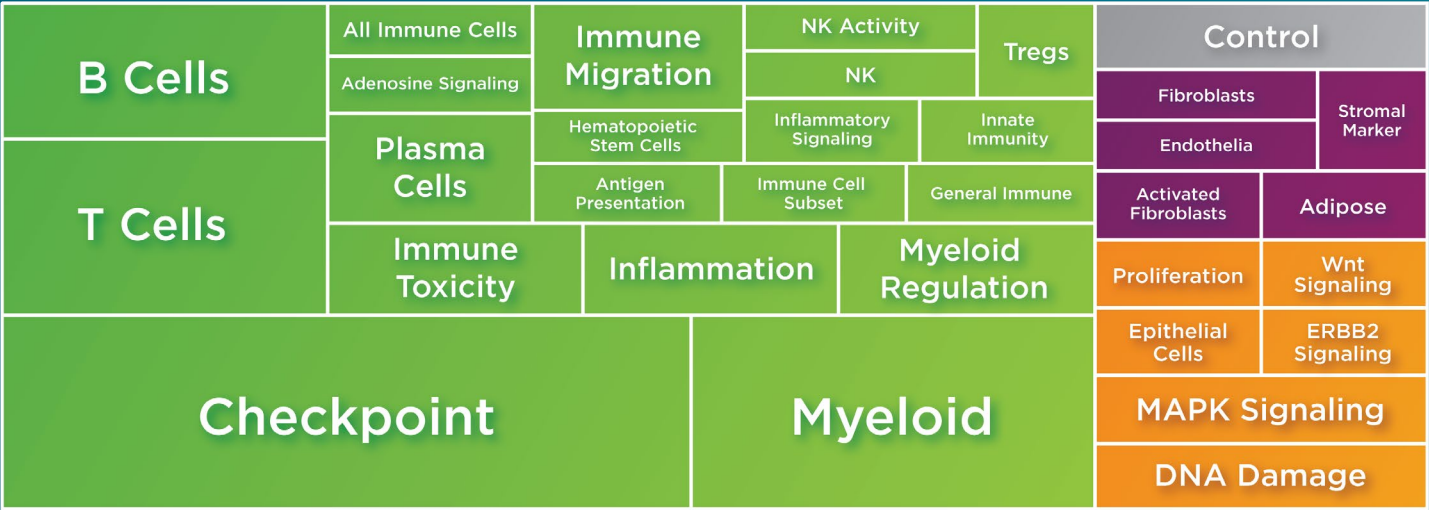
CosMx™ 64-Plex Human IO Protein Panel

Human IO
64-plex panel

4-1BB	CD127	CD27	CD45	FABP4	ICAM1	LAG3	SMA
B7-H3	CD138	CD3	CD45RA	Fibronectin	ICOS	LAMP1	STING
Bcl-2	CD14	CD31	CD56	FOXP3	IDO1	NF-kB p65	TCF7
Beta-catenin	CD15	CD34	CD68	GITR	IgD	p53	Tim-3
CCR7	CD16	CD38	CD8	GZMA	IL-18	pan-RAS	Vimentin
CD11b	CD163	CD39	CTLA4	GZMB	IL-1b	PD-1	VISTA
CD11c	CD19	CD4	EGFR	Her2	iNOS	PD-L1	Rb IgG
CD123	CD20	CD40	EpCAM	HLA-DR	Ki-67	PD-L2	Ms IgG1
PanCK		Segmentation Cocktail		A la carte selection		CD45	

Morphology

Functional
Categorization

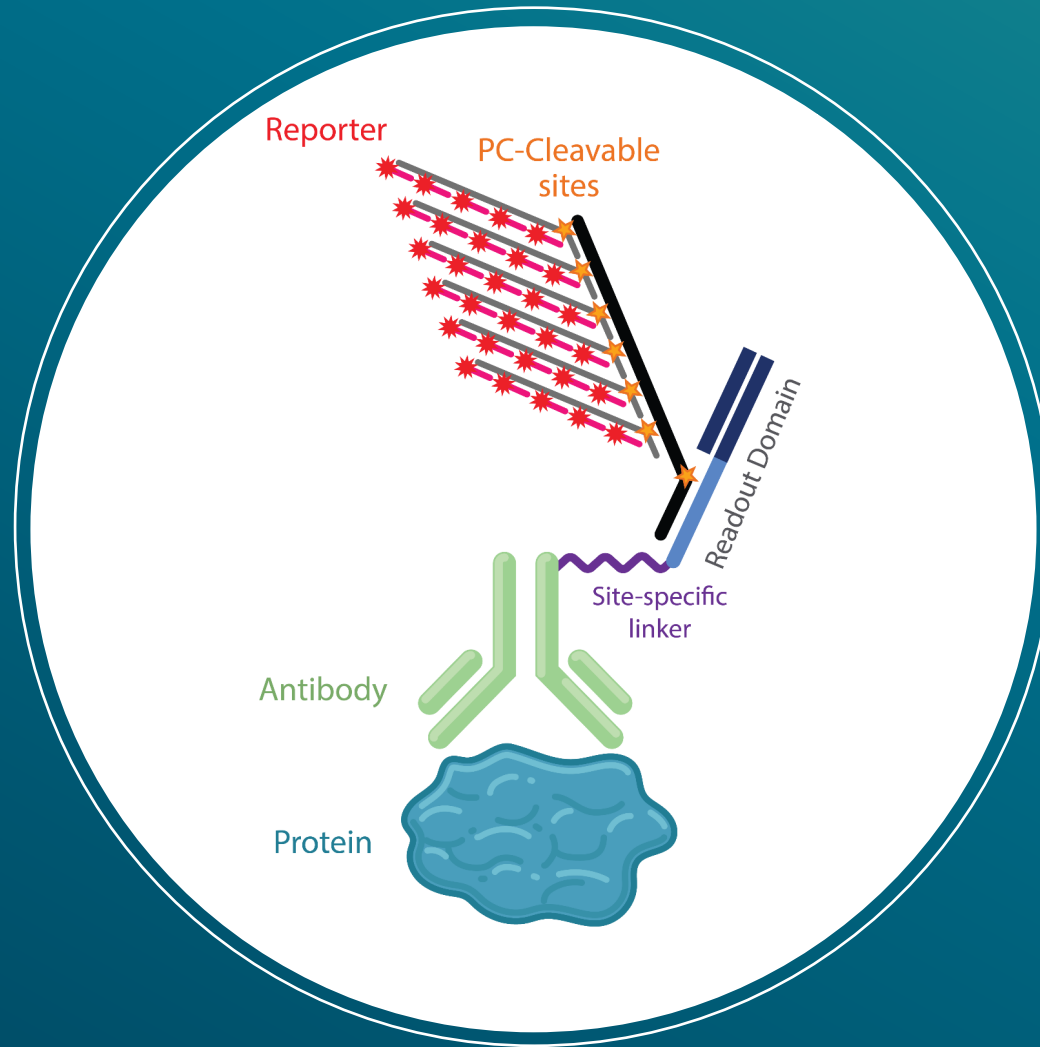


- Immune
- Cancer
- Stroma
- Control

Panel offerings and targets subject to change prior to commercial launch.

FOR RESEARCH USE ONLY. Not for use in diagnostic procedures.

Unique antibody oligo-tag design with flexible workflows



HIGH PLEX

Visualize 64 protein targets plus 4 morphology markers of interest

CUSTOMIZABLE

Add up to 8 additional custom protein targets (available Q2 2023)

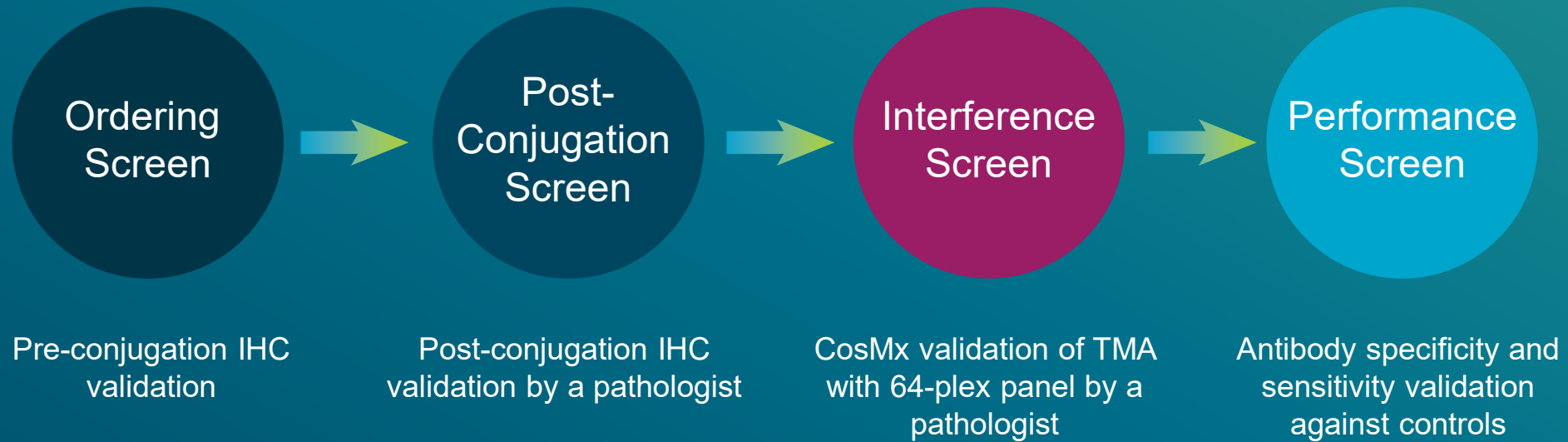
HIGH THROUGHPUT

Process up to 20 slides per week without sacrificing plex

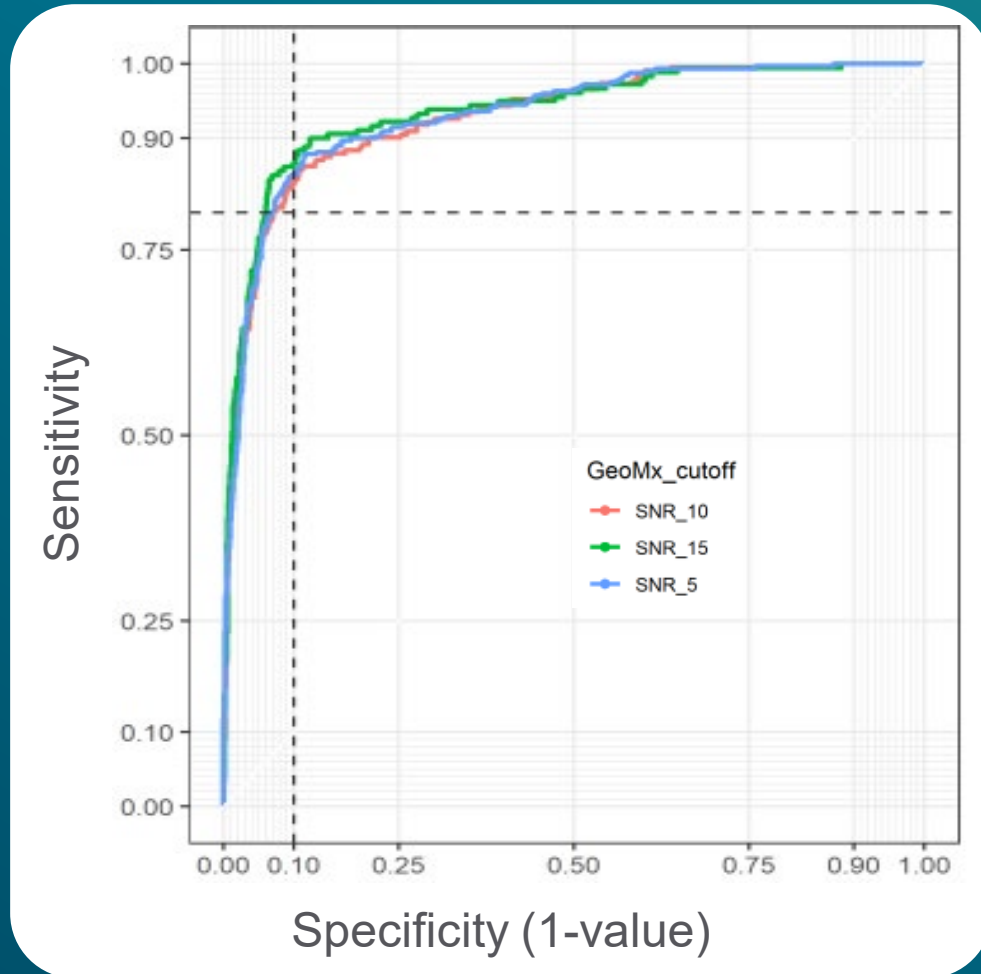
SEMI-AUTOMATION

Optional workflow with < 90 minutes hands on time

CosMx™ Antibody Validation Process



CosMx™ Antibody Validation ensures high sensitivity and specificity

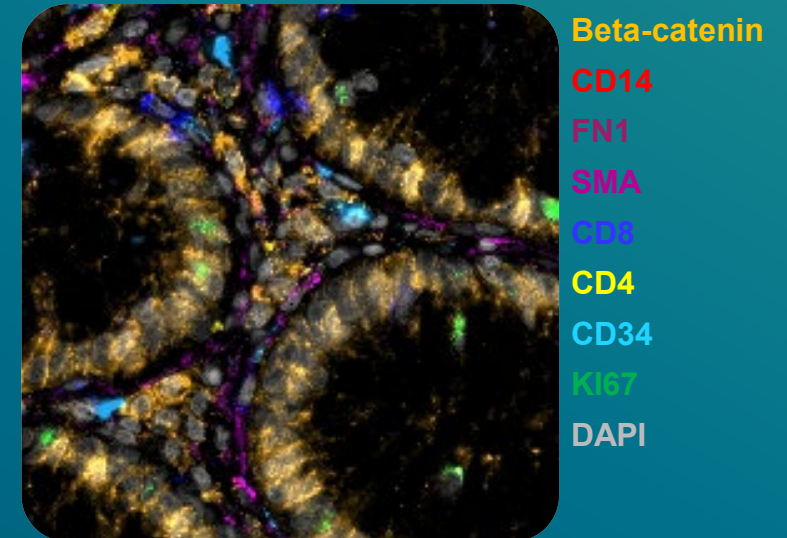
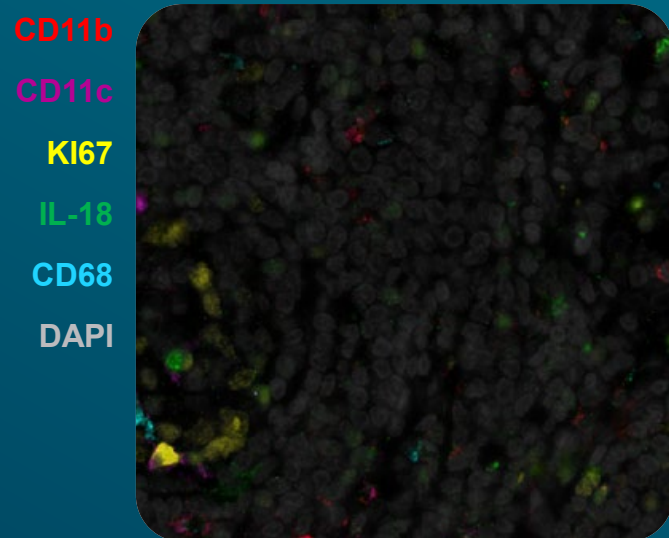
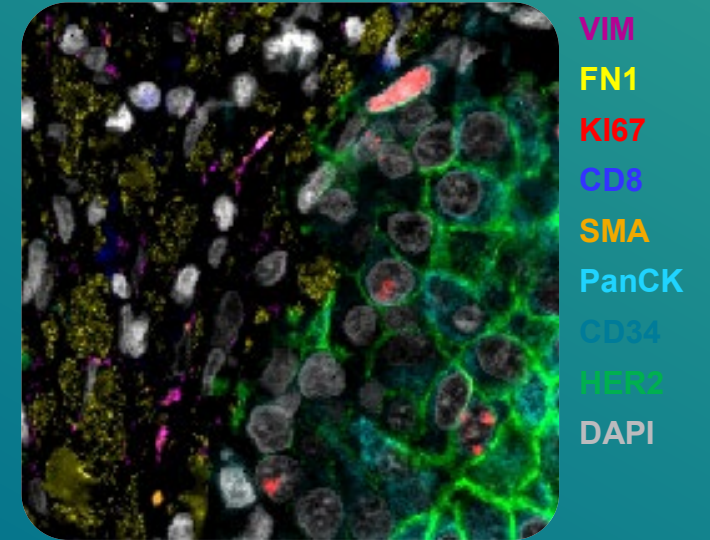
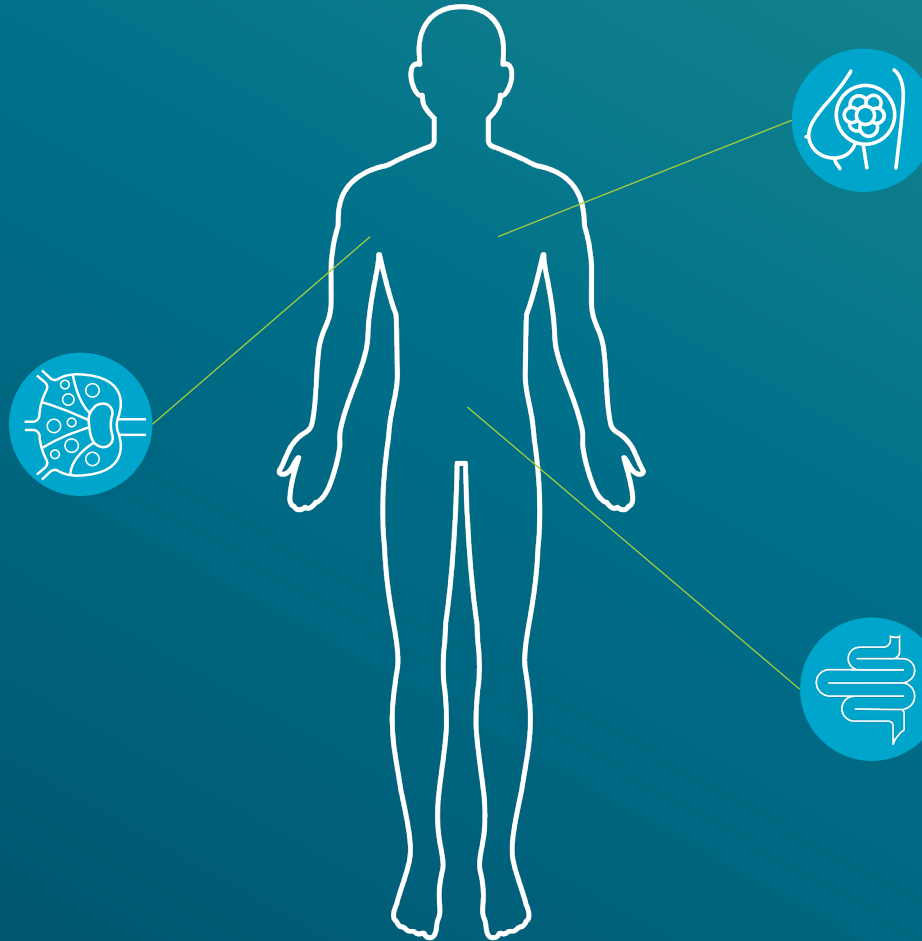
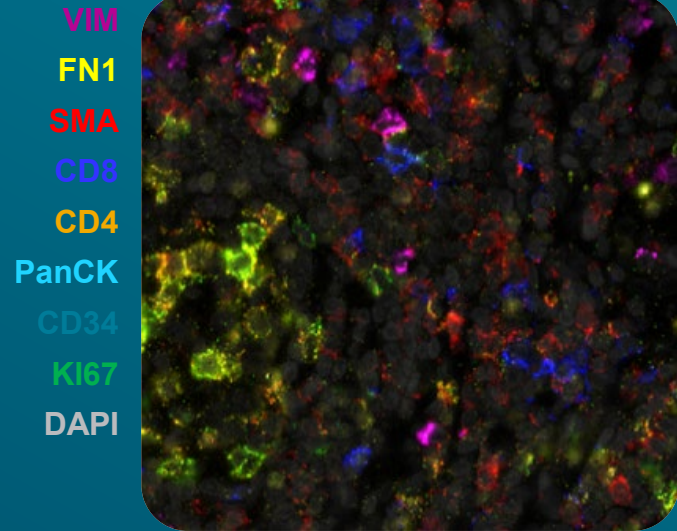


GeoMx Protein data comparison

> 90% Antibody Specificity

> 85% Antibody Sensitivity

Validated and ready to use across multiple tissue types



CosMx™ Protein Uses Single Molecule Chemistry with Cyclic Imaging

ANTIBODY STAIN



CYCLIC READOUT

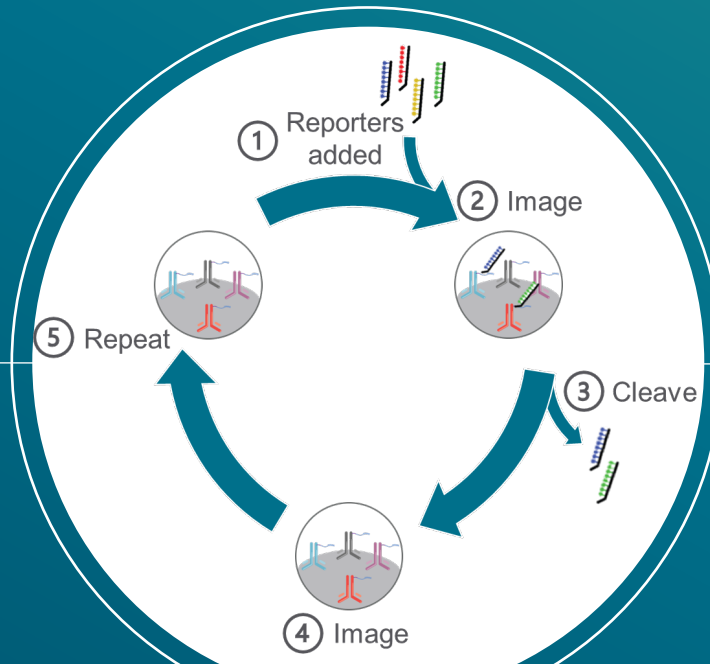
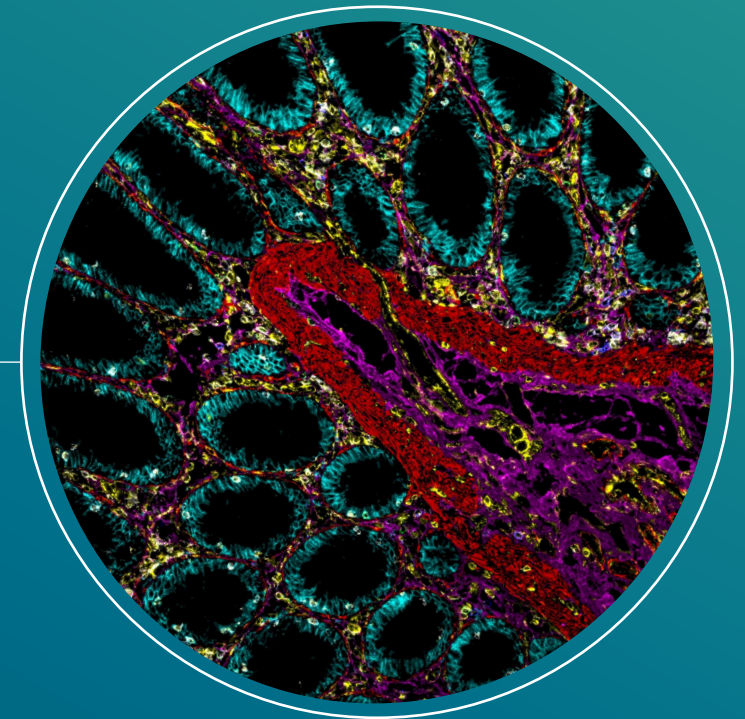
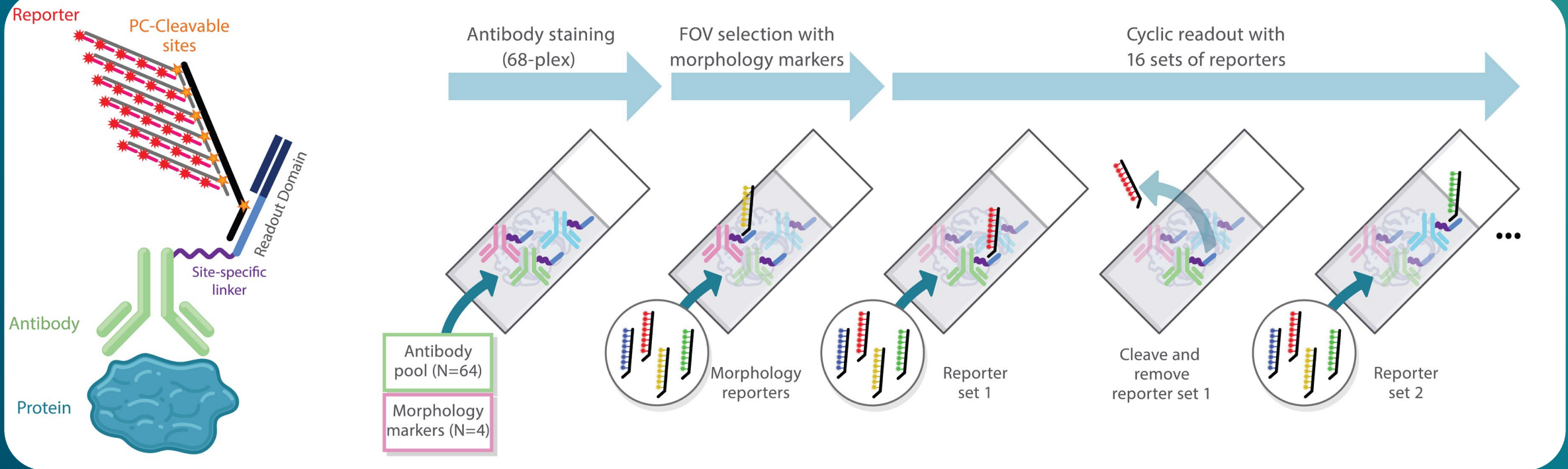


IMAGE ANALYSIS

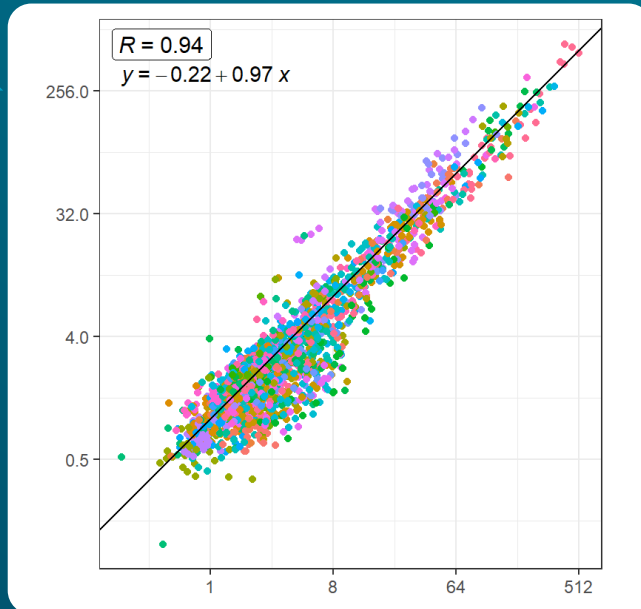


CosMx™ Protein Uses Single Molecule Chemistry with Cyclic Imaging

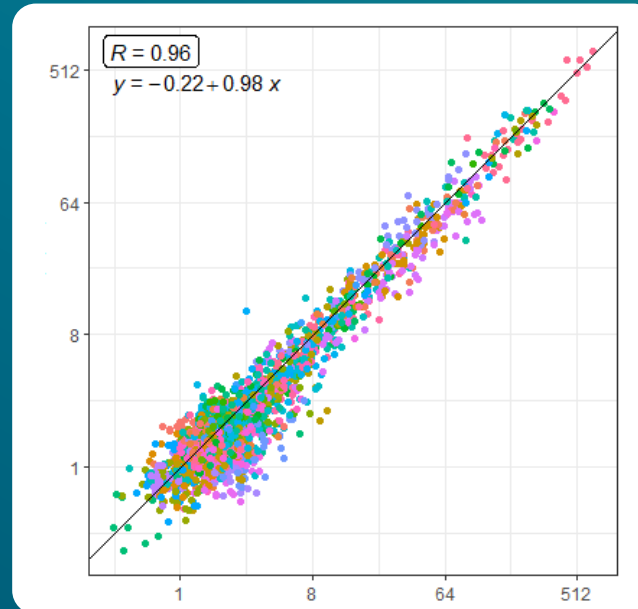


CosMx™ Protein demonstrates high reproducibility across sample preparation methods

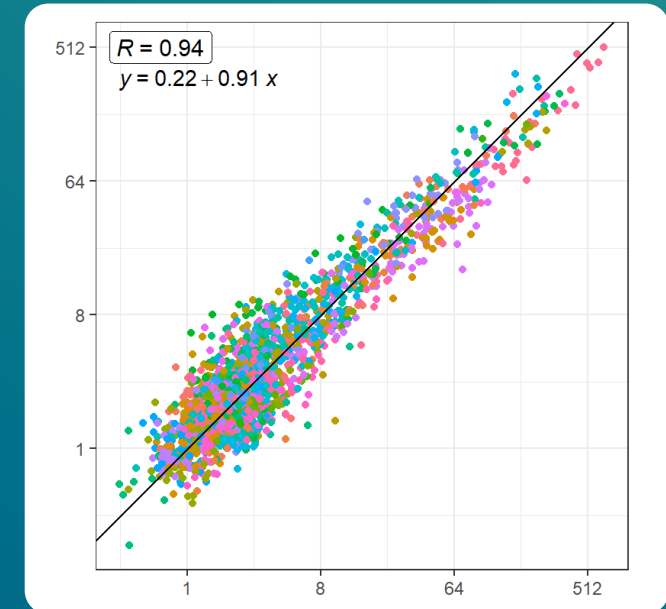
Automation / Automation



Manual / Manual



Automation / Manual



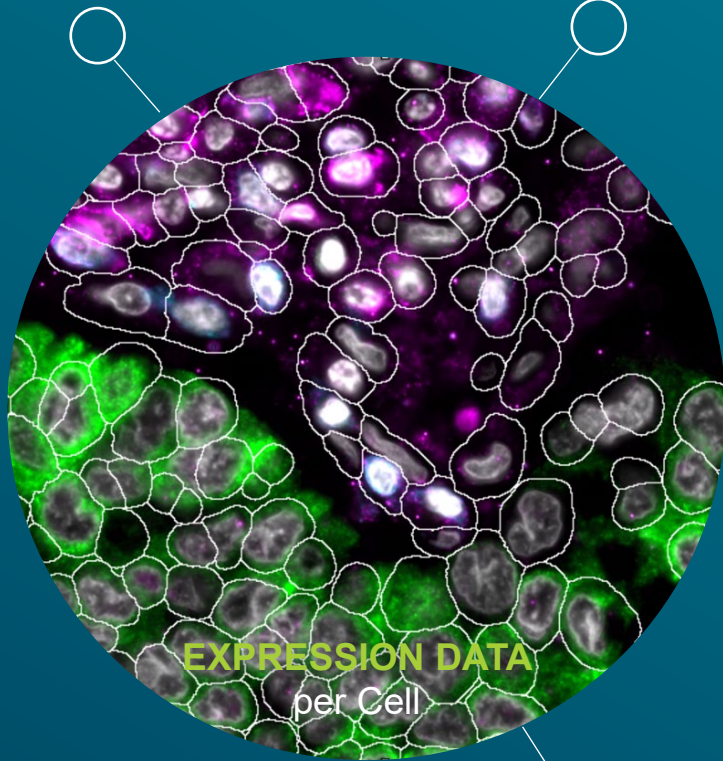
Slide 2

Slide 1

Simplified analysis outputs provide **per cell** and **per target** data

Cell-type
clusters

Cell-type
proteins

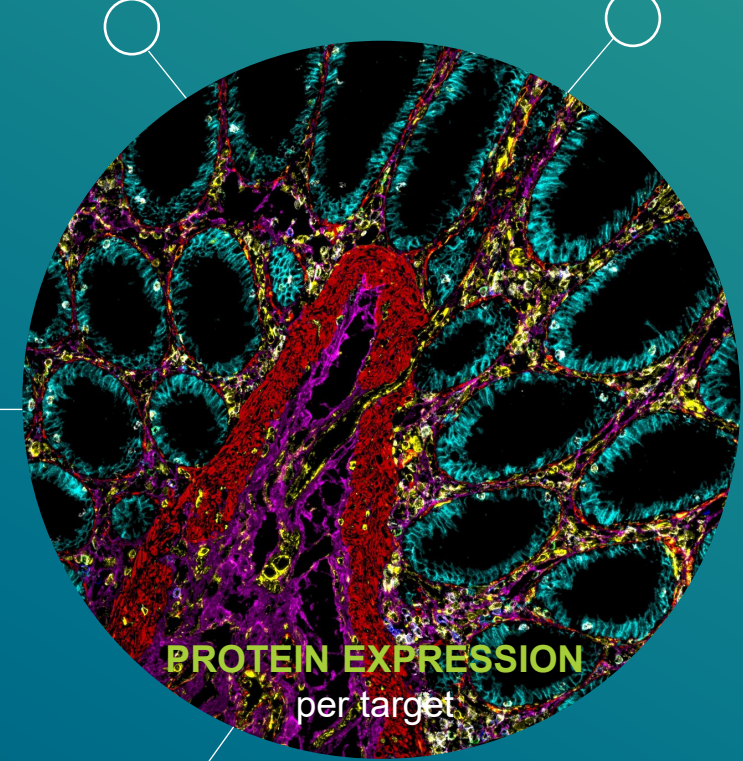


CSV file
per FOV



Pathway
mapping

Cell-cell
interaction

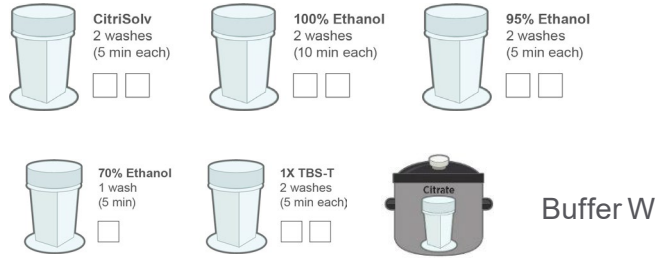


OME-TIFF
per target

CosMx™ Protein Assay slide prep overview

Slide Prep (Automatable on Leica Bond):

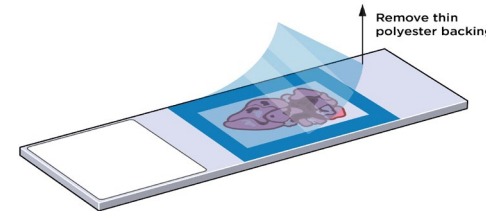
- Baking
- De-Wax
- Rehydration
- Washing
- Ag retrieval
- Blocking



Staining



O.N. Staining + Wash



4°C



Fiducial incubation
+ Wash



Post-fixation
+ Wash



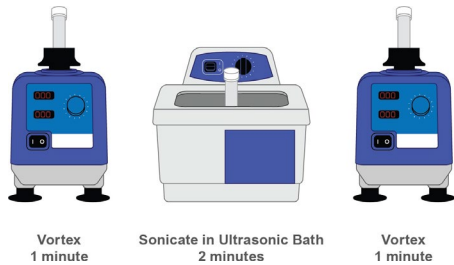
DAPI
+ Wash



NHS-acetate



Flow Cell Assembly



4% PFA, 30 min



2 ug/mL, 15 min



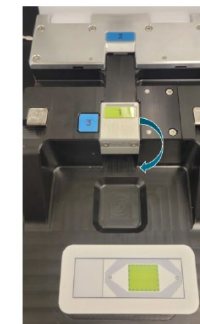
100mM, 15 min
Time-sensitive



0.00025% Fid



1X PBS



nanoString

FOR RESEARCH USE ONLY. Not for use in diagnostic procedures.